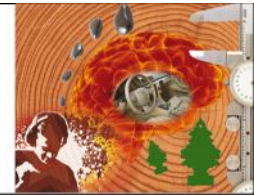




MINET
Measuring the Impossible Network
 FP6-NEST-Mtl-project-043297



Invitation to MINET Final Plenary Meeting

Date: Wednesday January 27, 2010

Time: 10.30 to 17.00

Location: Brussels, Belgium, Permanent Representation of Sweden to the European Union, Square de Meeûs 30


Measuring the Impossible (MtI) is a NEST Pathfinder Initiative by the EU Directorate General for Research and Directorate S-Implementation of the 'Ideas' Programme. This initiative has supported interdisciplinary research and novel investigative methods with prospects for advancing the measurement of multidimensional phenomena, which are mediated by human perception and/or interpretation. MINET has advanced the frontiers of the science of measurement and responded to future requirements for measuring properties such as comfort, naturalness, perceived quality, feelings, body language and consciousness. As the coordination action of the 14 MtI research projects (13 STREPS, 1 SSA), MINET has maximized the project outcomes by promoting synergy and information exchange, with the long-term goal of building and supporting a broad Europe-wide MtI community in various application areas.

Projects Coordinated by MINET:

- BIOEMERGENCES: Towards personalized health
- BRAINTUNING: Striking a tune: music and the brain
- CLOSED: Exploring sound: the neglecting design dimension
- COBOL: Science revealing the mysteries of body language
- EYEWITNEM: How to lie without trying
- FEEL EUROPE: How deep is emotion?
- FUGA: Time to measure games appeal
- MEMORY: What makes holes in time?
- MINDBRIDGE: Consciousness unraveled at last
- MONAT: Reproducing nature's look and feel
- PERCEPT: In the eye of the beholder
- SOMAPS: Understanding what your skin is saying
- SYNTEX: The emotions of texture
- SYSPAQ: Improving indoor air quality of life

Please see agenda on page 2

www.measuringimpossible.net

<p>Project Coordinator Professor Birgitta Berglund Department of Psychology Stockholm University SE-106 91 Stockholm SWEDEN</p> <p>Tel: +46-8-16 38 57 Fax: +46-8-16 55 22 E-mail: birgitta.berglund@ki.se</p>	<p>Administrative support Dr Anders Höglund Tel: +46-8-16 38 53 Fax: +46-8-16 55 22 E-mail: anders.hoglund@psychology.su.se</p>	
--	--	---

Invitation to MINET Final Plenary Meeting

Date: Wednesday January 27, 2010

Time: 10.30 to 17.00

Location: Brussels, Belgium, Permanent Representation of Sweden to the European Union, Square de Meeûs 30

Preliminary Program

09:30-10:30: Refreshments and registration

10.30-10.40: Welcome and Introduction to MINET – including MINET Measures of Success
Birgitta Berglund, Stockholm University (SU), Sweden

MINET and the Future

10.40-11.00: MINET Book: “Measurement with Persons” – Results from MINET’s Interdisciplinary Training Course.
Giovanni B. Rossi, University of Genoa (UNIGE), Italy

11.00-11.10: MINET Webpage, c-MINET and e-MINET: Information and Researcher Networks in Measuring the Impossible (MtI).
Janko Drnovšek, University of Ljubljana (UNI-LJ), Slovenia

11.10-11.45: MINET Expert Group Report – Future Roadmap for MtI Research
Birgitta Berglund, Stockholm University (SU), Sweden

11.45-12.30: Discussion and Proposals of Future Habitat for MtI Research (*in plenum*)

12.30-13.30: Lunch

MINET Contributions to Europe: Understanding ‘Hard’ and ‘Soft’ Metrology

13.30-14.00 Interdisciplinary MtI Exchange of Knowledge
Leslie Pendrill, National Testing & Research Institute (SP), Borås, Sweden

14.00-14.20 MINET Workshops and Conference Sessions
Gerie van der Heijden, Biometris at Wageningen University and Research Center (BIO), The Netherlands

MtI Project Contributions to Europe

14.20-14.40: MtI Research Project COBOL – Communication with Emotional Body Language
Beatrice De Gelder, Tilburg University, The Netherlands

14.40-15.00: MtI Research Project EYEWITMEM – Eyewitness Memory
Asher Koriat, University of Haifa (UH), Israel

15.00-15:20: MtI Research Project PERCEPT – Perceptual Consciousness
Boris Velichkovsky, Technical University of Dresden, Germany

15.20-15.50: Coffee

Project Coordinator

Professor Birgitta Berglund

Department of Psychology

Stockholm University

SE-106 91 Stockholm

SWEDEN

Tel: +46-8-16 38 57

Fax: +46-8-16 55 22

E-mail:

birgitta.berglund@ki.se

Administrative support

Dr Anders Höglund

Tel: +46-8-16 38 53

Fax: +46-8-16 55 22

E-mail:

anders.hoglund@psychology.su.se



**Stockholm
University**

Invitation to MINET Final Plenary Meeting

Date: Wednesday January 27, 2010

Time: 10.30 to 17.00

Location: Brussels, Belgium, Permanent Representation of Sweden to the European Union, Square de Meeûs 30

15.50-16.10: MtI Research Project BRAINTUNING – Tuning the Brain for Music
Marie Tervaniemi, University of Helsinki, Finland

16.10-16.30: MtI Research Project SYNTEX – Synthesis of Textures
Christian Eitzinger, Profactor GmbH, Steir-Gleink, Austria

16.30-16.50: MtI Research Project MONAT – Measurement of Naturalness
Teresa Goodman, National Physical Laboratory (NPL), Teddington, UK

16.50-17.00: Summary and Closing of Meeting
Birgitta Berglund, Stockholm University (SU), Sweden

Project Coordinator

Professor Birgitta Berglund

Department of Psychology

Stockholm University

SE-106 91 Stockholm

SWEDEN

Tel: +46-8-16 38 57

Fax: +46-8-16 55 22

E-mail:
birgitta.berglund@ki.se

Administrative support

Dr Anders Höglund

Tel: +46-8-16 38 53

Fax: +46-8-16 55 22

E-mail:
anders.hoglund@psychology.su.se



Stockholm
University